

Important information for all POP users

To improve network security BIDMC is implementing a policy whereby all POP and IMAP e-mail clients must use SSL (Secure Sockets Layer). SSL encrypts communications between the mail server and the mail client. SSL prevents others from eavesdropping or impersonating our email servers. Without SSL your user name and password are sent in clear text. This makes it very easy for someone to intercept your connection and steal your username and password. By using SSL your user credentials (account name and password) and the mail messages themselves are all encrypted.

Does Eudora support SSL / TLS?

Beginning in version 5.1, Windows and Mac Classic versions of Eudora support SSL for POP3, IMAP4, and SMTP. For Macintosh OS X (10.2 or higher), version 5.2 supports SSL.

What is SSL / TLS? ?

SSL (Secure Sockets Layer) / TLS (Transport Layer Security) encrypts everything sent between two computers. When used with email it protects your password and the contents of your email from being intercepted while en route between your computer and your email server. (When used with web pages it protects your credit card numbers and other personal information from an eavesdropper between your computer and the web site.) Its use does not imply that the data is encrypted when it is on a computer, just while it is in transit.

What are the requirements for SSL:

Eudora 5.1 or higher

Macintosh's 'System Keychain' must be loaded. If you are using a version of the Mac OS prior to 9.x, you can download the System Keychain from Apple's website.

For OSX users, make sure you are running OS 10.2 or higher and you are running Eudora 5.2 or higher. Again the System Keychain must be enabled.

The 'Keychain Access' control panel must be loaded, and have a keychain configured. To configure a keychain, open the 'Keychain Access' control panel. If you do not already have a keychain configured, you will be prompted to do so. Follow the steps for creating a new keychain, then close the control panel. If you already have a keychain configured, close the control panel, and proceed to the next step.

How do I reconfigure Eudora 5.2 for Mac OS 9.x to use Secure Sockets Layer (SSL)?

If you are not using Eudora 5.2, you can upgrade for free from [Eudora's Home Page](http://www.eudora.com) (<http://www.eudora.com>).

1. Start Eudora.
2. From the **Special** menu, select **Settings**.
3. In the list on the left, select **Checking Mail**.
4. In the **Mail Server** text box, type: `mail.caregroup.org`
5. In the list on the left, select the **SSL** icon.
6. Verify that the **Personality** selection is appropriate. The Dominant personality may be the only one listed.
7. From the **SSL for POP** drop-down list, select **Required (Alternate Port)**.
8. In the list on the left, click the **Miscellaneous** icon.
9. Place a check in the **Use System Keychain to Store Passwords** check box.
10. Click **OK**.
11. Check your e-mail using your PID password. A dialog box will open and you will be asked, "Would you like to create a keychain to store your passwords and certificates?"

12. Click the **Create** button. The Create Keychain window will open.
13. In the **Keychain Name** text box, type: POP (or something that describes what this keychain is for)
14. In the **Password** text box, type a password . This can be any password (with more than 6 characters) you wish, or you may use your email password to make it easier to remember.
15. In the **Confirm** text box, re-type your password.
16. Click the **Create** button.
17. In the **Unknown SSL Certificate** window, click the **Open** button.
18. In the **Add Certificate** window, click **OK**.
19. Click the **Done** button.
20. Close the **POP** window.
21. Check your e-mail to verify that everything works.
22. Close Eudora.
23. Launch Eudora again and check your e-mail.
24. A dialog box will open and you will be asked, "Do you want to allow access to your keychain?" Place a check in the **Allow Eudora to Access Items Without Warning While Running** check box.
25. If you get a second dialog box, click the **Yes** button.
26. Click the **Allow** button.
27. Check your e-mail.

How do I reconfigure Eudora 6.X for Mac OS X to use Secure Sockets Layer (SSL)?

IMAP/POP

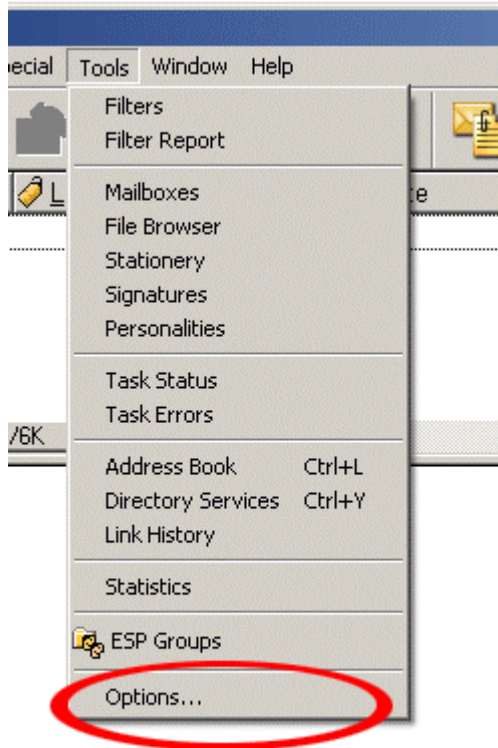
1. From the Special menu, select Settings
2. Select the Checking Mail button in the left menu
3. Ensure that the Mail Host is set to: mail.caregroup.org
4. In the window, on the left, scroll until you see the option for SSL and click to select it
5. For SSL for POP and SSL for IMAP (depending on which you use), change the setting to Required (Alternate Port)
7. Click on the Sending Mail icon in the left menu
8. Ensure that the SMTP Server is set to: mail.caregroup.org
9. Ensure Allow authorization is checked
10. Click on the SSL icon near the bottom of the left category list.
11. Click OK

How do I reconfiguring Eudora 6.x to Use POP on windows

The objective of these changes is to synchronize the Eudora mail reader with the mail server.

1. Start **Eudora**.

- From the **Tools** menu, choose **Options...**



- A dialog box titled *Options* will appear. In the category listing on the left-hand side, select **Getting Started**.



- The window you see should be the same as what is shown above. Enter the following information in the appropriate fields:
 - Return address:** *email address*

- **Mail Server (Incoming): mail.caregroup.org**
- **Login Name:** Your POP Server login name
- **SMTP Server (Outgoing): mail.caregroup.org**
- **Check Allow Authentication**

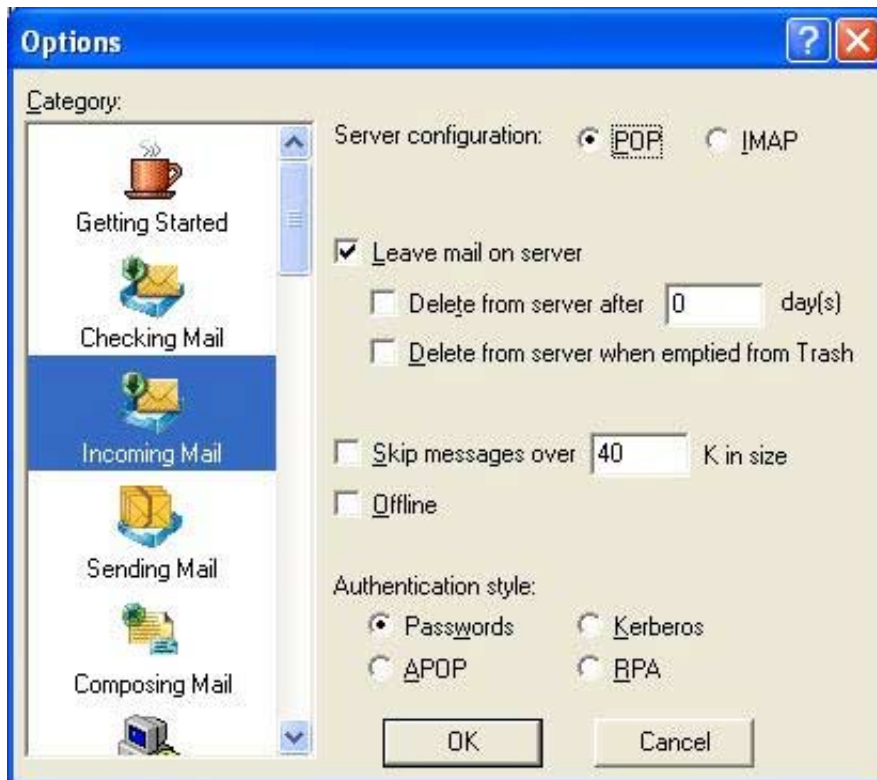
5. In the category listing, select **Checking Mail**. The window you see should be the same as what is shown below.



Make the following changes in this window:

- Under Secure Sockets when Receiving, select from the dropdown menu: **Required, Alternate Port**
- In the item, **Check mail every 'X' minutes**, change that number from "0" to "20". Setting "20" tells Eudora to check your mail every twenty minutes. Do **not** enter a number lower than 20 since it is unlikely that you will receive a message more often than that. A setting less than 20 slows the mail server down making reading mail slower for everyone. If you choose to leave the value at "0", Eudora will only check your mail when you ask it to and not every set period of time.

6. Next select the category **Incoming Mail**. The window you see should be the same as what is shown below.



Confirm that the settings in this window are as follows:

- The default **Server configuration** is POP.
- **Leave mail on server** : Icheck this box to keep your incoming mail messages on the server
- Under **Authentication style**: make sure that the button to the left of the item **Passwords** is filled.

7. Next select the sending mail icon and make the following changes:



- Make sure **Allow authentication** is checked.

Click okay and that should finish the configuration